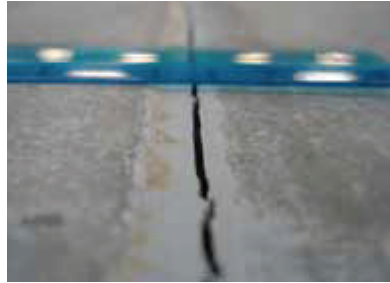


Guide to Basic Floor Repairs

METZGER/McGUIRE

JOINT FILLER SEPARATION - Minor to Severe



REPAIR MATERIAL
Semi-Rigid Epoxy or Polyurea Joint Filler
MM-80

Rapid Access
Spal-Pro RS-88

Freezer/Cooler
Spal-Pro 2000 or RSF



TOOLS & EQUIPMENT NEEDED
Preferred:
Joint clean-out saw with dustless shroud, Braided wire wheel, Diamond blade, Vacuum system, Compressed air, Razor scraper / torch (MM-80)

Minimal:
Right angle grinder, Braided wire wheel, Shop vacuum, Compressed air, Razor



JOINT SPALLING - Minor (Up to 1" Wide)



REPAIR MATERIAL
Semi-Rigid Epoxy or Polyurea Joint Filler
MM-80

Spal-Pro 2000 or RS-88

Freezer/Cooler
Spal-Pro 2000 or RSF



TOOLS & EQUIPMENT NEEDED
Preferred:
Right angle grinder with dustless shroud, Joint clean-out saw, Diamond blades, Vacuum system, Razor scraper / torch (MM-80)

Minimal:
Right angle grinder, Diamond blades, Shop vacuum, Razor scraper / torch (MM-80)



JOINT SPALLING - Major (Greater than 1")



REPAIR MATERIAL
Rigid Epoxy Mortar
Armor-Hard
Armor-Hard Extreme

Semi-Rigid Epoxy or Polyurea Joint Filler
Spal-Pro 2000 or MM-80

Freezer/Cooler
Spal-Pro 2000, AH Extreme



TOOLS & EQUIPMENT NEEDED
Preferred:
Right angle grinder with dustless shroud, Joint clean-out saw, Diamond blades, Vacuum system, Razor scraper / torch (MM-80), Pneumatic chipper

Minimal:
Right angle grinder, Braided wire wheel, Shop vacuum, Razor scraper / torch (MM-80), hammer / chisel



RANDOM CRACKS - Less than 1/8" Width



REPAIR MATERIAL
Structural Repair Polyurea
Rapid Refloor

Freezer/Cooler
Rapid Refloor



TOOLS & EQUIPMENT NEEDED
Preferred:
Right angle grinder with Nyalox or soft wire wheel, Medium grit grinding pad, Vacuum / Compressed air

Minimal:
Wire brush, Vacuum / Compressed air



SURFACE SPALLS / DEFECTS - Larger than 6"



REPAIR MATERIAL
Structural Epoxy Mortar
Armor-Hard

Rapid Access
Armor-Hard Extreme

Freezer/Cooler
Spal-Pro 2000 or AH Extreme



TOOLS & EQUIPMENT NEEDED
Preferred:
Right angle grinder with dustless shroud, Diamond blades, Zec / Grinding Pads, Vacuum system, Razor scraper

Minimal:
3 lb. hammer, Cold chisel, Shop vacuum, Trowel, Razor scraper / torch (MM-80)



APPROXIMATE MATERIAL COVERAGE RATES

Based on one U.S. gallon cartridge conversion:

450 ml - 1/8 Gal. 600 ml - 1/6 Gal. 900 ml - 1/4 Gal. 1500 ml - 2/5 Gal.

NARROW JOINTS & CRACKS			SAND MODIFICATION NET YIELDS		
1/8 X 3/4" = 200 lf/gal.	3/16 x 3/4" = 135 lf/gal.	1/4 x 3/4" = 100 lf/gal.	LIQUID EPOXY + SILICA SAND = MORTAR YIELD		
1/8 X 1" = 150 lf/gal.	3/16 x 1" = 100 lf/gal.	1/4 X 1" = 80 lf/gal.	GAL. EPOXY + GAL. SAND = GAL. MORTAR		
1/8 x 1-1/4" = 125 lf/gal.	3/16 x 1-1/4" = 85 lf/gal.	1/4 x 1-1/4" = 60 lf/gal.	1	1	1.6
1/8 x 1-1/2" = 100 lf/gal.	3/16 x 1-1/2" = 70 lf/gal.	1/4 x 1-1/2" = 50 lf/gal.	1	1.5	1.9
1/8 x 1-3/4" = 85 lf/gal.	3/16 x 1-3/4" = 60 lf/gal.	1/4 x 1-3/4" = 45 lf/gal.	1	2	2.2
1/8 X 2" = 75 lf /gal.	3/16 X 2" = 50 lf/gal.	1/4 X 2" = 40 lf/gal.	1	2.5	2.5
			1	3	2.8
WIDER JOINTS & CRACKS			Gou Ges, Holes, etc.		
3/8 X 3/8" = 135 lf/gal.	3/4 x 1/2" = 50 lf/gal.	1 X 3/4" = 25 lf/gal.	450 ML UNIT = 28.75 cubic inches		
3/8 X 1/2" = 100 lf/gal.	3/4 x 3/4" = 35 lf/gal.	1 X 1" = 20 lf/gal.	900 ML UNIT = 57.5 cubic inches		
1/2 X 1/2" = 80 lf/gal.	1 X 1/2" = 40 lf/gal.	1 x 2" = 10 lf/gal.	GALLON UNIT = 230 cubic inches		



www.runyonsurfaceprep.com



800.896.8665



Indiana & California Locations