



RUNYON
SURFACE PREP
RENTAL & SUPPLY



METZGER/McGUIRE



CONCRETE FLOOR REPAIR

TABLE OF CONTENTS

Repairing concrete floors with our industry standard products ensures a quick and easy fix that will restore your structure's integrity for many years to come. Whether it's a joint spall or a surface defect you need to repair on an industrial, stained or colored floor, we have a quality product that will work for you. Have a look at the examples below to see how Runyon Surface Prep along with Metzger/McGuire can help with your industrial concrete floor repair and maintenance.

**NEED HELP REPAIRING
CONCRETE FLOORS?**

ARMOR-HARD REBUILD	03
CRACK REPAIR USING RS 88	04
METAL KEY JOINT REPIAR	05
MINOR JOINT SPALLING	06
MISC. FINISHED REPAIRS	07
SURFACE DEFECT REPAIR	08
WIDE EXPOSURE USING SAND MODIFIED MM-80	09
BOLLARD REPAIR USING SPAL-PRO 2000	10
FLOORS AND JOINTS	11

ARMOR-HARD JOINT REBUILD SEQUENCE

ARMOR-HARD REBUILD

ARMOR-HARD IS A 100% SOLIDS, TWO COMPONENT STRUCTURAL EPOXY MORTAR KIT INTENDED FOR USE IN THE STRUCTURAL REPAIR OR JOINTS, CRACKS AND OTHER SURFACE DEFECTS IN INDUSTRIAL CONCRETE FLOORS. ARMOR-HARD KIT COMES WITH A SPECIALLY ENGINEERED AGGREGATE BLEND DESIGNED FOR EASY TROWELING/FINISHING.



*SPALL-PRO RS88 (DECORATIVE)

*SPALL-PRO RS88 (DECORATIVE)

CRACK REPAIR USING RS 88 SEMI-RIGID POLYUREA JOINT FILLER

CRACK REPAIR USING RS 88

THIS SEMI-RIGID POLYUREA ALSO PROTECTS AND FILLS CONTRACTION AND CONSTRUCTION JOINT EDGES IN AREAS THAT BEAR A HIGH AMOUNT OF TRAFFIC, AND DUE TO ITS RAPID SET TIME, IT'S PERFECT WHEN DOWNTIME IS LIMITED. ALSO WELL SUITED FOR REPAIRING RANDOM CRACKS IN INDUSTRIAL FLOORS. SPAL-PRO RS88 IS FOR COMMERCIAL AND DECORATIVE FLOORS, EDGE-PRO 90 IS FOR INDUSTRIAL FLOORS.



1

ROUTE/CHASE CRACK TO A DEPTH OF 1/2" MIN. AND REMOVE ISLANDS



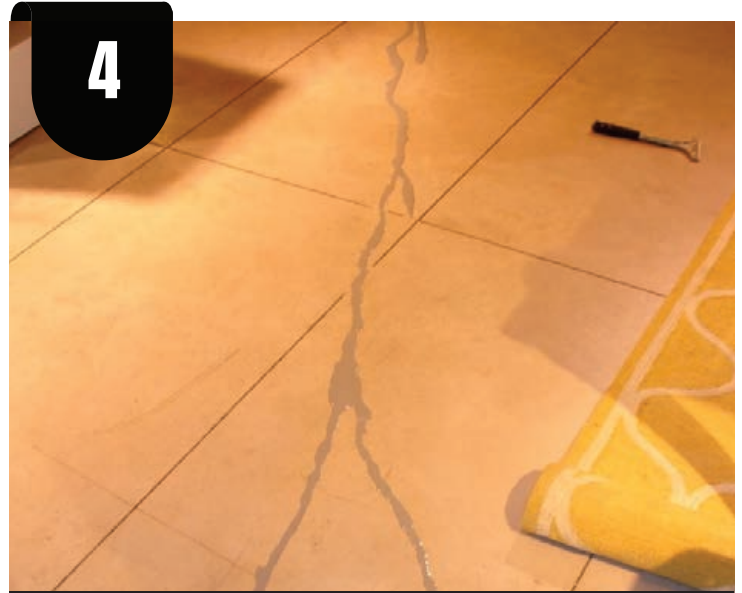
2

INSTALL EP90 OR RS88 SEMI-RIGID POLYUREA JOINT AND CRACK FILLER



3

RAZOR EXCESS FROM SLAB SURFACE AFTER CURE, TYPICALLY 1HR

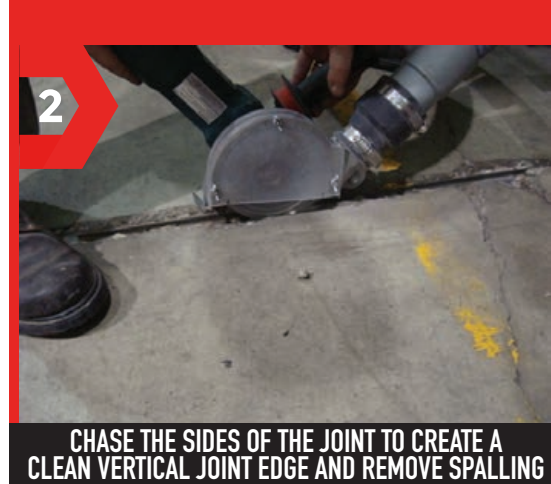
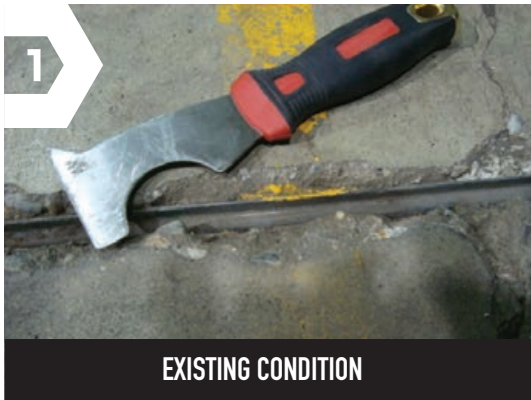


4

FINISHED PRODUCT

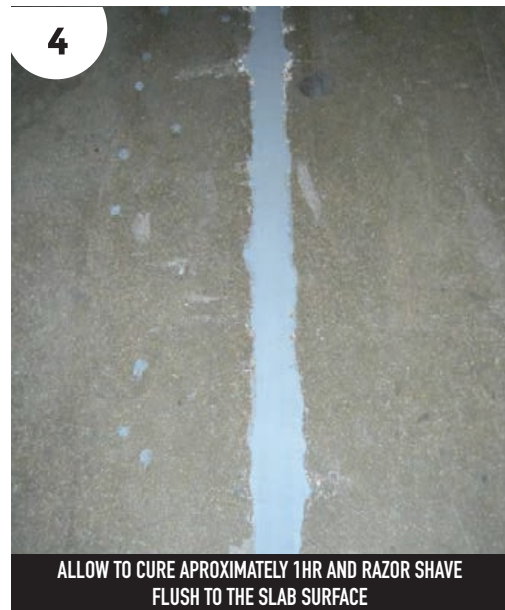
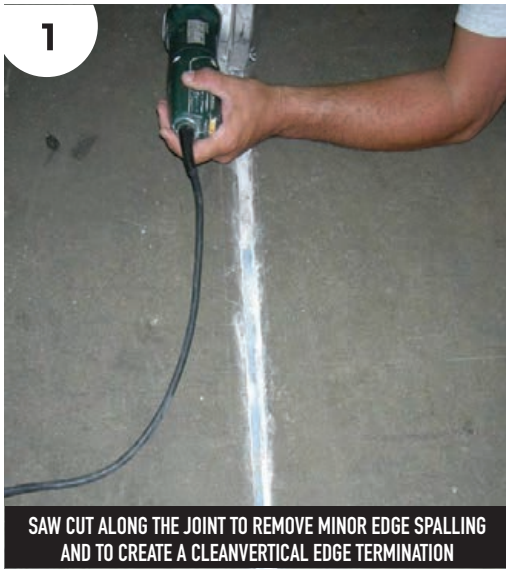
METAL KEY JOINT REPAIR

THIS PRODUCT IS THE FIRST SEMI-RIGID EPOXY OF ITS KIND AND IS WIDELY RECOGNIZED AS THE "INDUSTRY STANDARD." MM-80 IS DESIGNED FOR FILLING AND PROTECTING JOINTS IN AREAS THAT BEAR HEAVY TRAFFIC AND SIGNIFICANT LOADS AND IS EQUALLY WELL SUITED FOR JOINT FILLING OR JOINT AND CRACK REPAIR. FOR WIDER SPALL REPAIR OR JOINTS THAT MAY HAVE BEEN FITTED WITH A METAL KEYWAY, MM-80 CAN BE SAND MODIFIED AT 1 PART BLENDED EPOXY TO 1 PART CLEAN DRY SILICA SAND. SAND MODIFIED MM-80 WOULD TYPICALLY BE USED FOR JOINT SPALL REPAIR FROM 1" TO 1 1/2" OVERALL WIDTH.



MINOR JOINT SPALLING

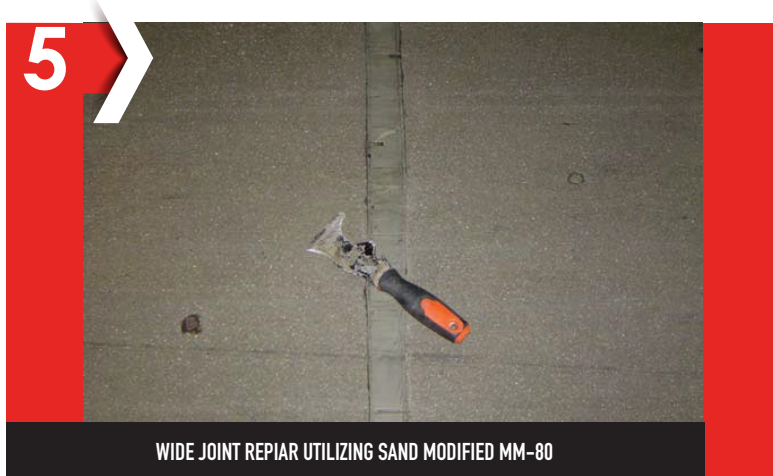
FORMULATED FOR USE IN BOTH AMBIENT AND FREEZER/COOLER CONCRETE FLOORS, SPAL-PRO 2000'S UNEQUALED DURABILITY, VERSATILITY AND QUICK CURE MAKES IT THE MOST WIDELY USED REPAIR MATERIAL FOR INDUSTRIAL FLOORS ACROSS THE COUNTRY AND LIGHTER TRAFFIC FLOORS OR DECORATIVE POLISHED CONCRETE FLOORS, SPAL-PRO RS88 POLYUREA JOINT FILLER CAN BE UTILIZED IN COLOR TO MATCH THE SLAB SURFACE USING THE SAME PROCEDURES FOR PREPARATION, PLACEMENT, AND FINISHING.



LESS THAN 1"

MISC. FINISHED REPAIRS

WHILE IT'S NOT POSSIBLE TO PREVENT ALL SURFACE DEFECTS, CRACKS, OR DEEPER CONCRETE FLOOR REPAIR CONCERNS, IT'S EASY TO FIND THE PROPER REPAIR SOLUTION FOR YOUR FACILITY WITHIN OUR LINE OF TOP-QUALITY REPAIR PRODUCT SOLUTIONS. WE INVITE YOU TO BROWSE OUR PRODUCT LINE TO IDENTIFY THE MOST SUITABLE PRODUCTS FOR YOUR NEEDS.



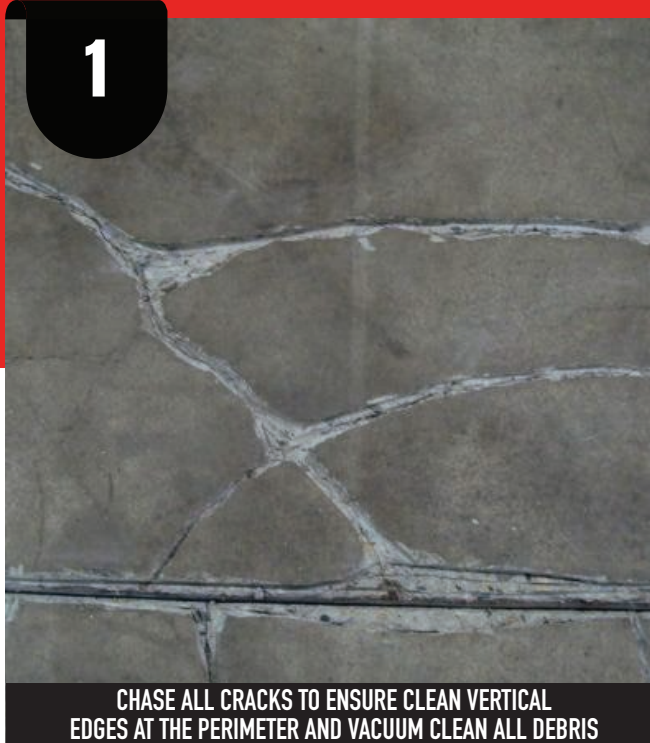
SURFACE DEFECT REPAIR

THIS LOW VISCOSITY, STRUCTURAL POLYUREA IS APPROPRIATE FOR REPAIR OF RANDOM CRACKS, BOLT HOLES, POPOUTS, AND OTHER MINOR SURFACE IMPERFECTIONS. RAPID REFLOOR CAN BE COLORED TO MATCH ANY ADJACENT SLAB SURFACE.



VERY LARGE CRACK

MM-80 SEMI-RIGID EPOXY JOINT FILLER WAS DESIGNED TO PROTECT JOINTS AND CRACKS FROM DAMAGE RESULTING FROM SMALL HARD WHEELED TRAFFIC. MM-80 CAN ALSO BE USED IN A SAND MODIFIED FORMAT (1 PART MM-80 TO 1 PART CLEAN DRY SILICA SAND) TO FILL LARGE, GREATER THAN 1", RANDOM CRACKS.



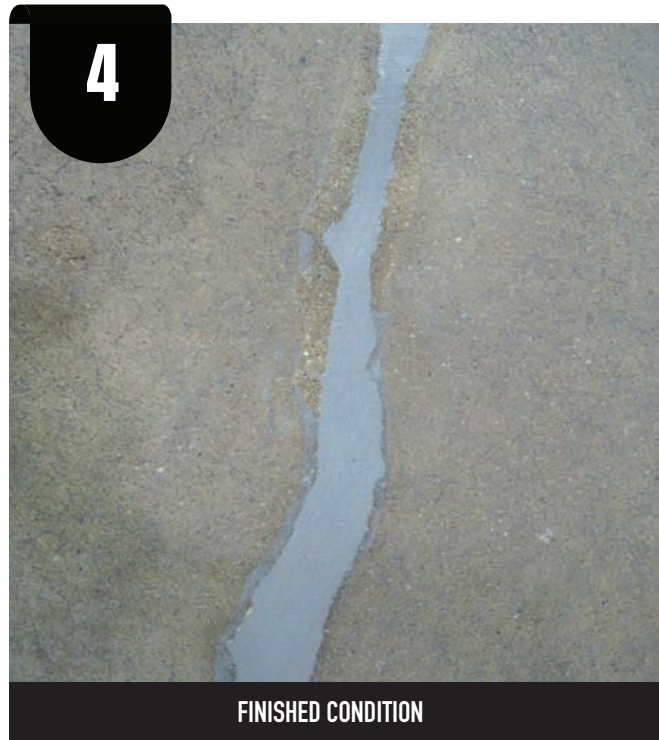
CHASE ALL CRACKS TO ENSURE CLEAN VERTICAL EDGES AT THE PERIMETER AND VACUUM CLEAN ALL DEBRIS



FILL PREPARED CRACKS WITH SAND MODIFIED MM80 SEMI-RIGID EPOXY



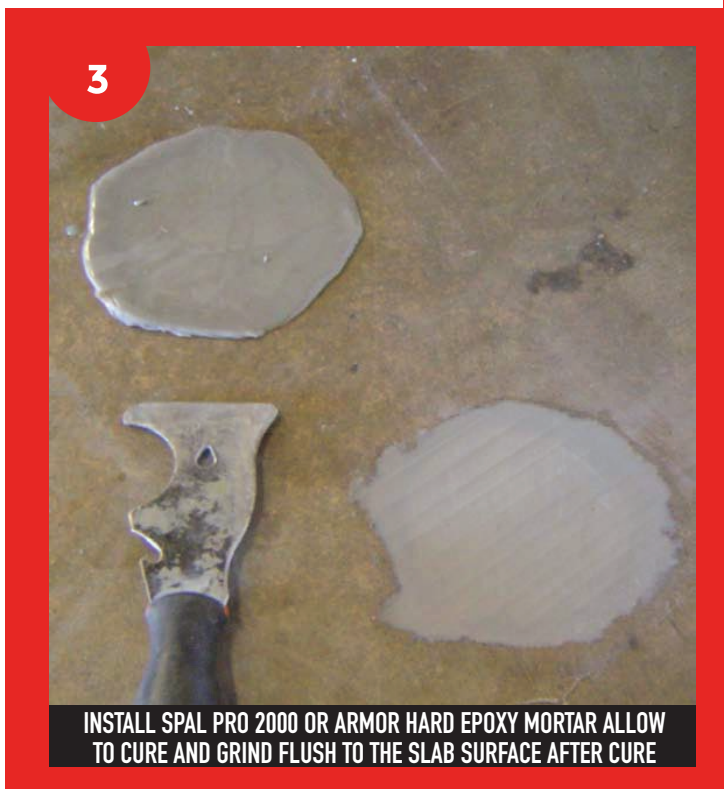
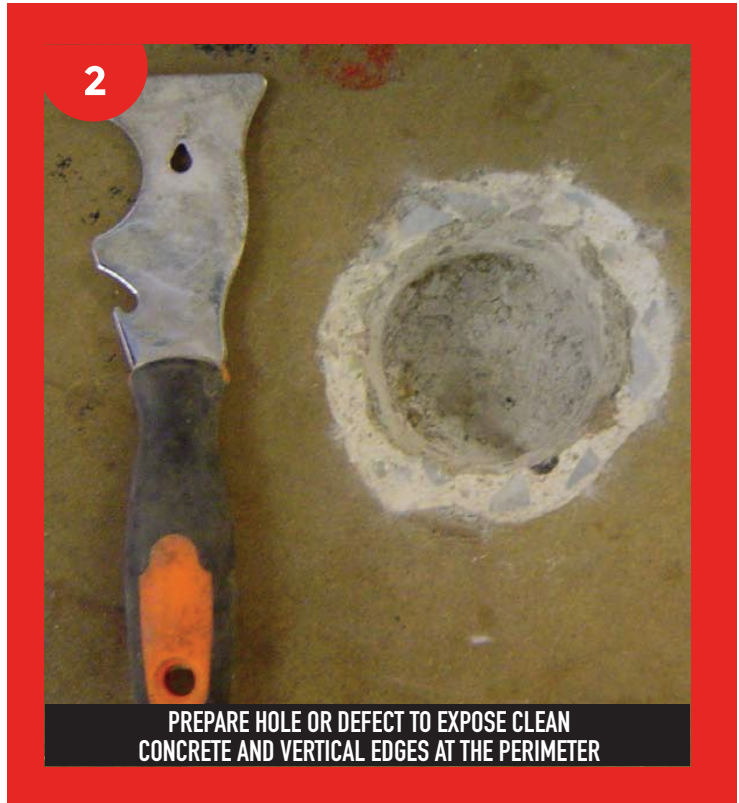
ALLOW TO CURE, TYPICALLY OVERNIGHT, AND THEN SURFACE GRIND EXCESS FLUSH TO THE SLAD SURFACE



FINISHED CONDITION

ARMOR HARD STRUCTURAL MORTAR

FORMULATED FOR USE IN BOTH AMBIENT AND FREEZER/COOLER CONCRETE FLOORS FOR BOLLARD HOLE REPAIR, SPAL-PRO 2000'S UNEQUALED DURABILITY, VERSATILITY AND QUICK CURE MAKES IT THE MOST WIDELY USED REPAIR MATERIAL FOR INDUSTRIAL FLOORS ACROSS THE COUNTRY.



FLOORS & JOINTS

JUST LIKE YOUR CAR -- REGULAR MAINTENANCE KEEPS IT RUNNING RIGHT. CLEANING, REFRESHING, REVITALIZING AND EVALUATING SHOULD BE DONE REGULARLY.

THE FREQUENCY OF MAINTENANCE DEPENDS ON THE APPEARANCE YOU WANT AND THE PERFORMANCE YOU DEMAND. IF YOUR HIGHLY POLISHED FLOOR GETS THOUSANDS OF VISITORS DAILY, YOU'LL NEED TO CLEAN, REFRESH AND REVITALIZE MORE OFTEN THAN THE OWNER OF A STEEL-TROWELED FLOOR IN A WAREHOUSE.

INDUSTRIAL FLOOR JOINTS

Unless maintained & treated properly:

- Joint deterioration may occur, where joint edges become impact points, damaging material handling vehicle's wheels.

- Open joints may host bacteria, insects, etc. and present sanitation concerns.

- Likely maintenance and repair issues within the first few years of a floor's life.

- Joint filler separation (most common maintenance issue).

- Issues which require repairs: Joint filler collapse, joint edge spalling, and elevation differences across joint.

- Dock areas and doors are the most common locations for joint problems.



JOINT SEPARATION



- Periodically check if separation is equal or greater than 1/32" (credit card width).

- Tears within filler do not lead to joint edge exposure and require less maintenance.

- Separation voids exceeding 1/32" may require refilling.

- Clean and fill voids with semi-rigid polyurea filler if edge deterioration is present.

- Void dimension can change with season, if remained constant over 6 months, consider refilling.

JOINT FILLER COLLAPSE

- Collapsed joint fillers create impact points on the edges. If noticed, consider joint repair options to minimize further damage and higher costs.

- Involves removing existing clean, structurally sound edges, and refilling the joint with a semi rigid epoxy (ambient temps) or semi rigid polyurea (freezer/cooler areas).

- Rebuilding concrete edges may be required if damage exceeds 1 1/2."



SURFACE ISSUE CRITERIA

- Signs of spalling, chipping or other deterioration

- Evidence of dusting or gradual erosion of surface

- Any deterioration areas where impact can be felt by MHV operators

- Areas exhibiting wear/damage that appears to be unusual or develops/changes rapidly

- _____
- _____
- _____



RUNYON
SURFACE PREP
RENTAL & SUPPLY

VISIT RUNYON SURFACE PREP FOR YOUR REPAIR NEEDS



RUNYON
SURFACE PREP
RENTAL & SUPPLY



METZGER/McGUIRE

 (800) 896-8665
 RUNYONSURFACEPREP.COM

 1402 CHASE CT.
CARMEL, IN 46032