

# AMERIPOLISH®

## SURELOCK



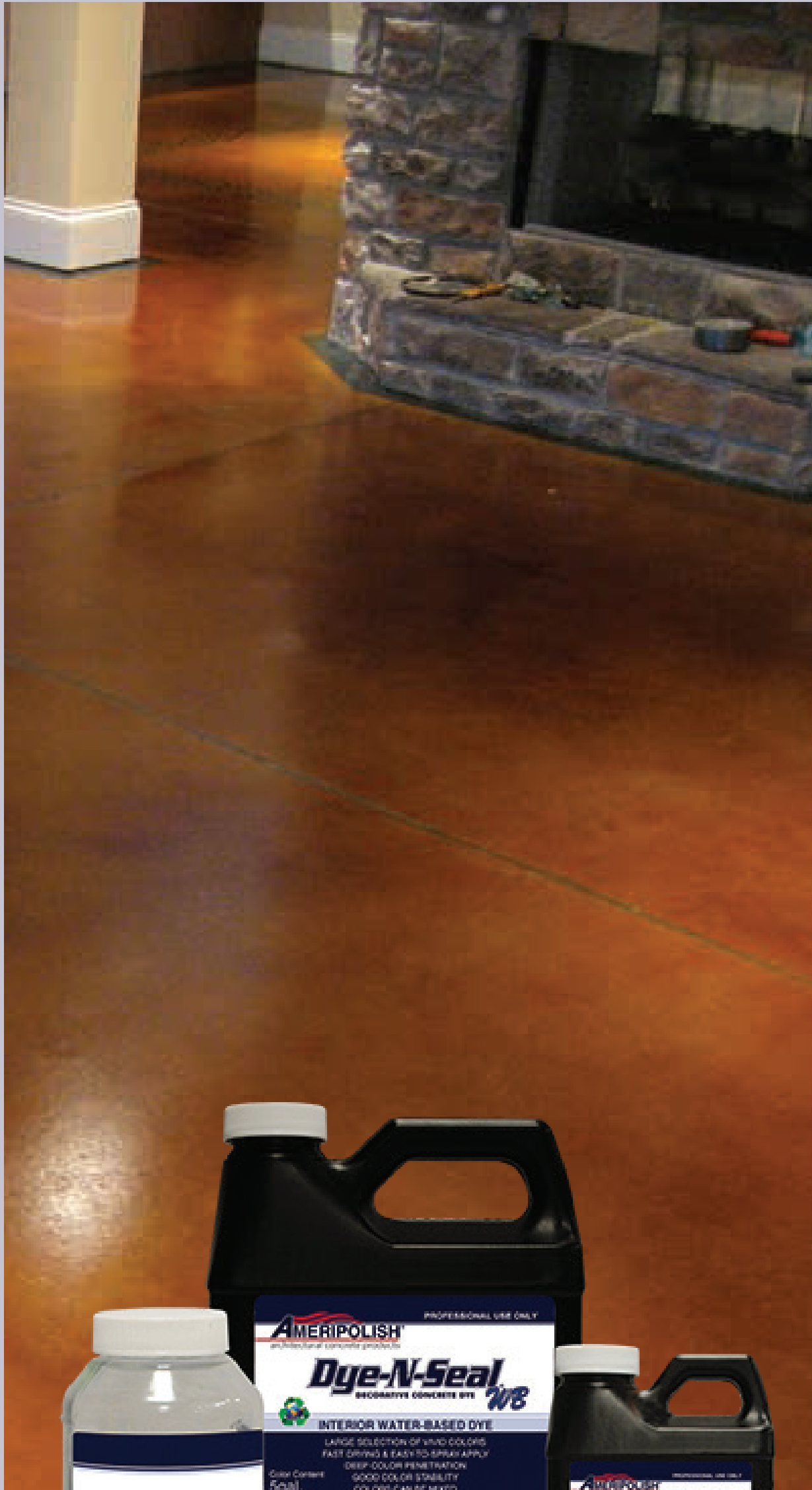
GOLD	RAW SIENNA	CARAMEL	SAND
TERRA COTTA	MAHOGANY	SADDLE BROWN	CHOCOLATE BROWN
WALNUT	BURNT SIENNA	CHESTNUT	RED
MAROON	SEPIA	EGGPLANT	TURQUOISE
SLATE BLUE	PATRIOT BLUE	GREEN	PINE GREEN
FOREST GREEN	GRAY	BLACK	MIDNIGHT BLACK



SureLock Dye Can be used with Ameripolish 3D HS Desnsifier, Ameripolish SR2 Stain Resistor, and Ameripolish 3D SP Stain Protector.

These color samples are only a representation of the Ameripolish Dye colors. Change in concrete slab colors will affect the appearance of the dye. Color results cannot be guaranteed. Actual colors may vary.

## Water-Based Dyes



GOLD	RAW SIENNA	CARAMEL	SAND
TERRA COTTA	MAHOGANY	SADDLE BROWN	CHOCOLATE BROWN
WALNUT	BURNT SIENNA	CHESTNUT	MAROON
SEPIA	EGGPLANT	PATRIOT BLUE	TURQUOISE
SLATE BLUE	GREEN	PINE GREEN	FOREST GREEN
MIDNIGHT BLACK	BLACK		

### Fast-N-Easy Color

Why Acid Stain When You Can Dye-N-Seal® in 1/3 the Time?

Instead of wasting hours for acid stain to react, spray on Dye-N-Seal®, and it's dry in minutes. Remove the residue and you're ready to seal. Ameripolish Dye-N-Seal® works on almost any interior surface. Available in non-flammable water based formula and solvent base for applications which require faster drying times.



## Solvent-Based Dyes

GOLD	RAW SIENNA	CARAMEL	SAND
TERRA COTTA	MAHOGANY	SADDLE BROWN	CHOCOLATE BROWN
WALNUT	BURNT SIENNA	CHESTNUT	MAROON
SEPIA	EGGPLANT	PATRIOT BLUE	TURQUOISE
SLATE BLUE	GREEN	PINE GREEN	FOREST GREEN
MIDNIGHT BLACK	BLACK		

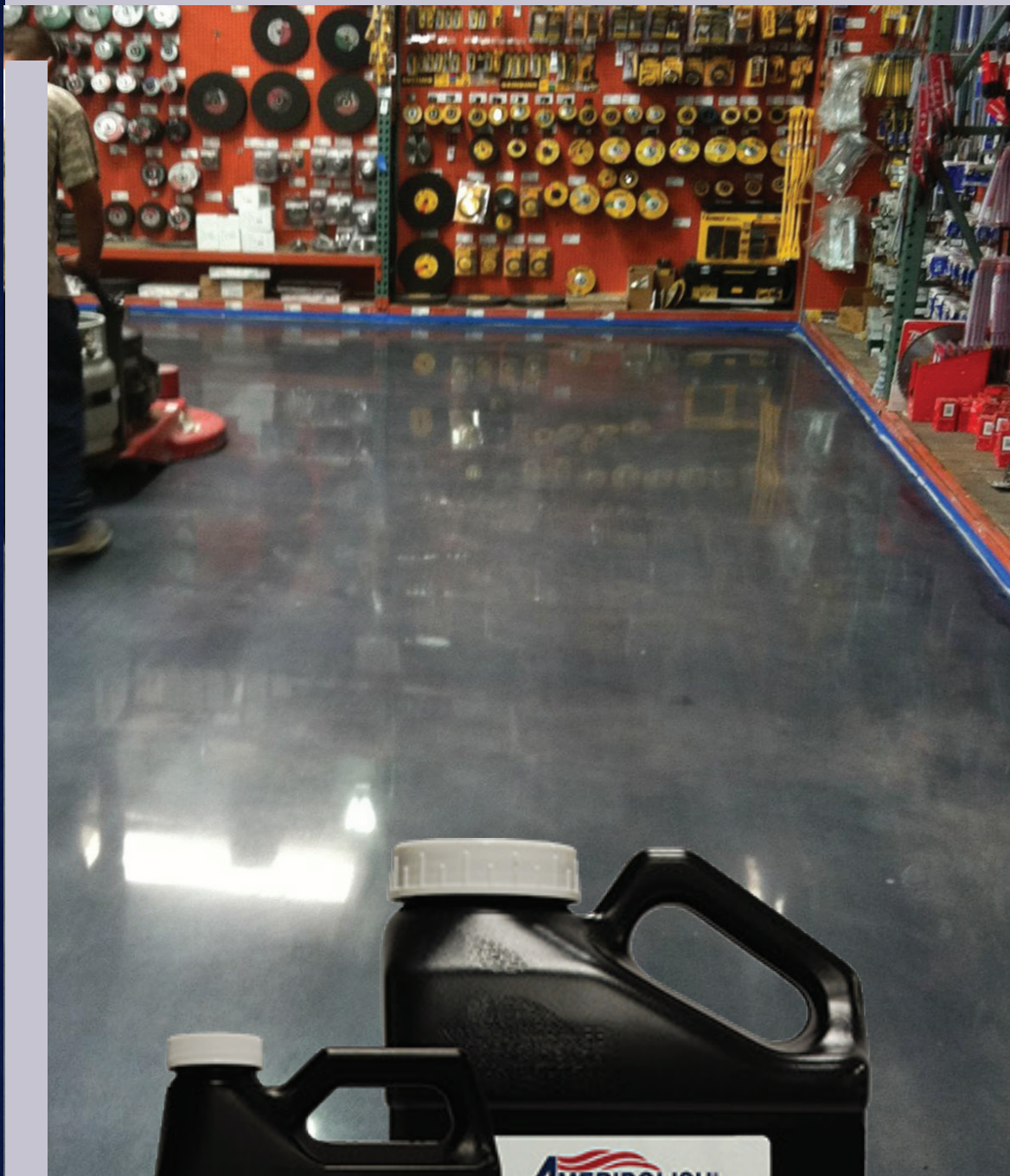
- Cuts application time by up to 2/3 compared to acid stain
- Extremely easy - spray applied
- Can be used on most interior concrete surfaces
- 22 vibrant standard colors, unlimited combinations
- Can also be used to “touch up” acid stain applications
- Available in two formulations:
  - Non-flammable water based formula
  - Fast drying solvent based formula
- Fast dissolving
- No VOC's
- Packaged in dry form for easy shipping, storage, and unlimited shelf life

These color samples are only a representation of the Ameripolish® Dye colors. Change in concrete slab colors will affect the appearance of the dye. Color results cannot be guaranteed. Actual colors may vary.

# OS Color System

**AMERIPOLISH®**  
architectural concrete products

## OS Integral Color



<b>Caramel</b> 2lbs/50lbs   1lb/50lbs	<b>Gold</b> 2lbs/50lbs   1lb/50lbs
<b>Sand</b> 2lbs/50lbs   1lb/50lbs	<b>Dusty</b> 2lbs/50lbs   1lb/50lbs
<b>Walnut</b> 2lbs/50lbs   1lb/50lbs	<b>Mahogany</b> 2lbs/50lbs   1lb/50lbs
<b>Terra Cotta</b> 2lbs/50lbs   1lb/50lbs	<b>Saddle</b> 2lbs/50lbs   1lb/50lbs
<b>Burnt Sienna</b> 2lbs/50lbs   1lb/50lbs	<b>Black</b> 2lbs/50lbs   1lb/50lbs
<b>Coco</b> 2lbs/50lbs   1lb/50lbs	<b>Midnight</b> 2lbs/50lbs

All colors are close approximations. Actual colors may vary depending on base concrete color and porosity.

Ameripolish® OS is a complete system of treatments for coloring, polishing, protecting and maintaining cementitious overlay floors. It is compatible with most cementitious overlays.

## OS Dye



OS Integral Color only	<b>Caramel</b>	<b>Gold</b>	<b>Sand</b>	<b>Walnut</b>	<b>Mahogany</b>	<b>Terra Cotta</b>
OS Integral Color + OS Dye accent						
OS Integral Color only	<b>Saddle Brown</b>	<b>Burnt Sienna</b>	<b>Chocolate Brown</b>	<b>Black</b>	<b>Midnight</b>	
OS Integral Color + OS Dye accent						

All colors are close approximations. Actual colors may vary depending on base concrete color and porosity.

# COLORJUICE 3D - COLOR CHART



25 TRANSPARENT - UV STABLE COLORS



**CARMEL**



**GOLD**



**DESERT SAND**



**AZTEC GOLD**



**SAND**



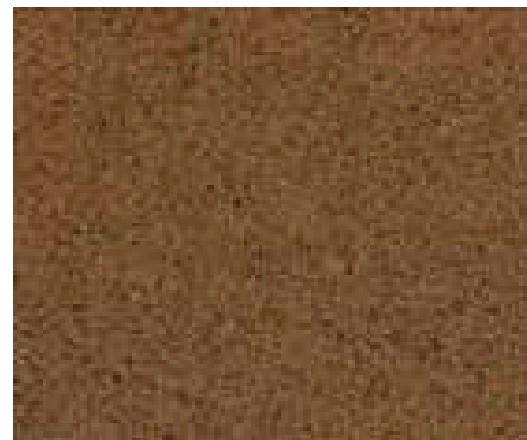
**ALMOND**



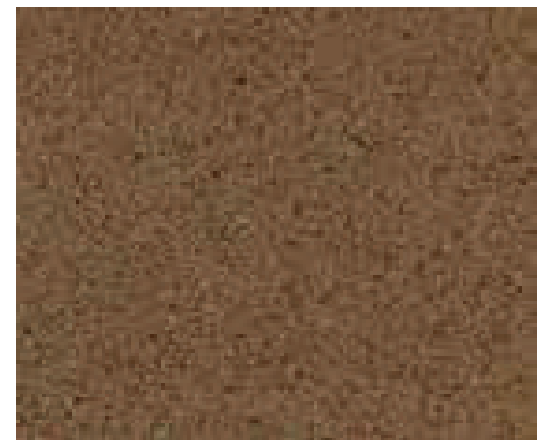
**VOLCANIC ASH**



**WALNUT**



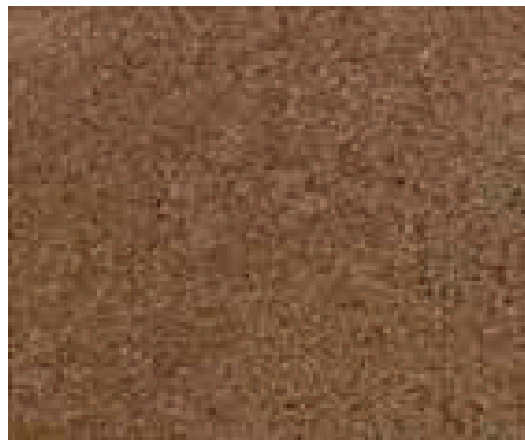
**CHOCOLATE BROWN**



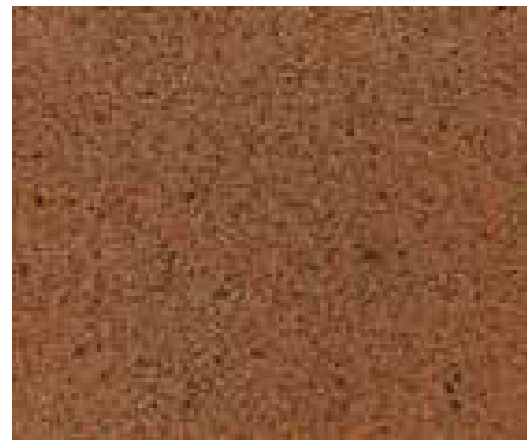
**BURNISHED BROWN**



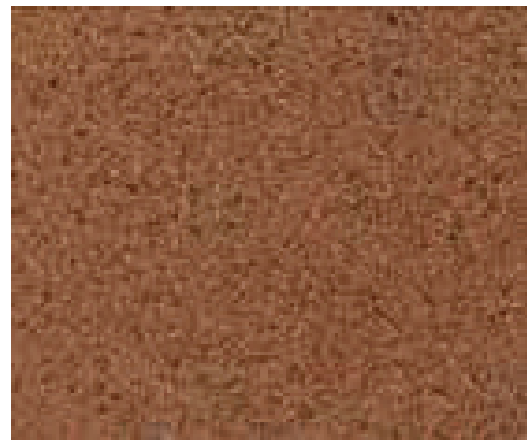
**SADDLE BROWN**



**DUSTY ROSE**



**TERRA COTTA**



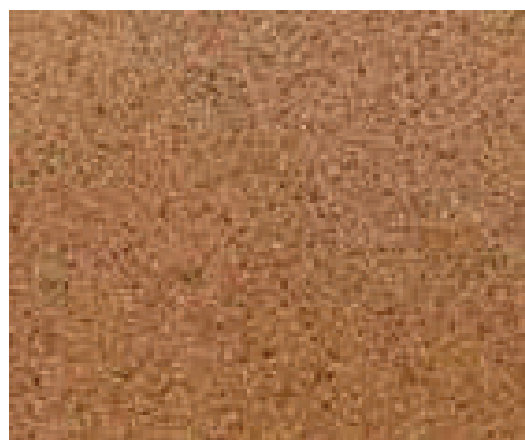
**BURNT SIENNA**



**MAHOGANY**



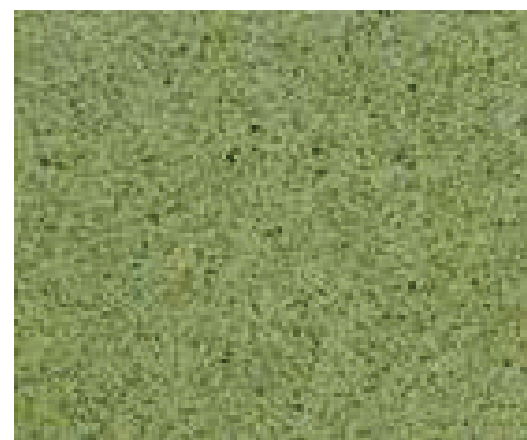
**TUSCANY RED**



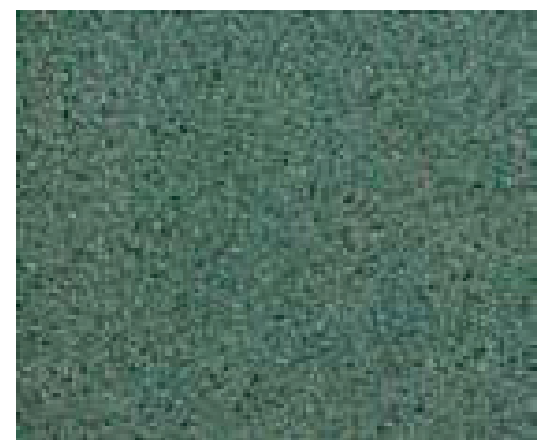
**COPPER PENNY**



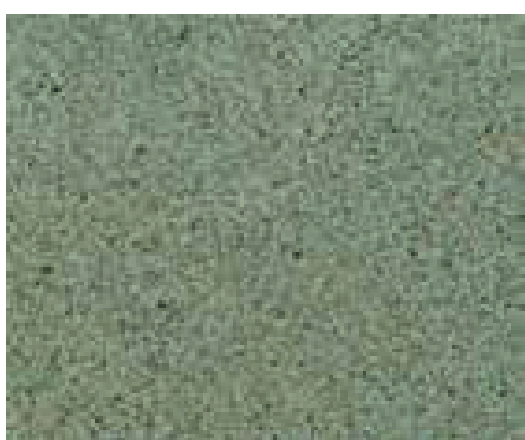
**CINNAMON**



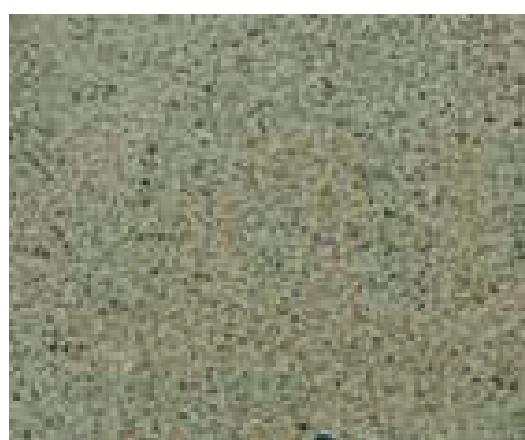
**OLIVE GREEN**



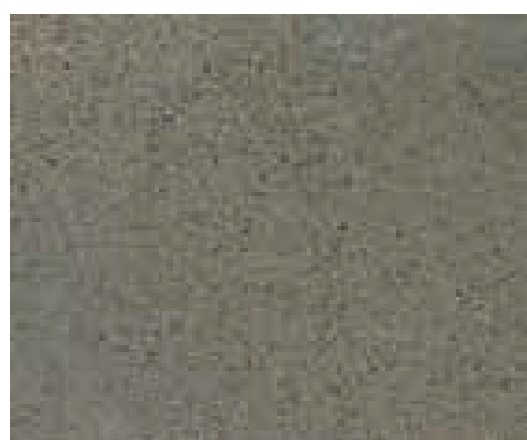
**SLATE BLUE**



**POLISHED PINE**



**STEEL BLUE**



**GREY**



**BLACK**



**TRANSPARENT WHITE**