

GUIDE TO POWER TROWEL POLISHING



RUNYON
SURFACE PREP
RENTAL & SUPPLY

www.runyonsurfaceprep.com
Indiana & California Locations
800.896.8665 • 800.785.7034



About Us

How Runyon Surface Prep goes above and beyond is not only our extensive rental equipment inventory, but a long-standing commitment to having products on the shelf and ready for you project at a moment's notice.

We offer dedicated support and training on all equipment, including the proven Runyon Tooling System. We specialize in innovative, cutting-edge, grinding and polishing technology. Our same day delivery service could get you out of a jam, and, as always, we will ship worldwide.

The best value comes from the integrity of successful & working perfectly



Wendy Runyon Ricker
President
317.506.0107



Vasco Tchakarov
Global Product Manager
317.775.0682



Kristen Fox
Director of Business Develop.
815.719.2278



Angela Meyer
Vice President of Sales
317.987.4353



Filip Akermark
East Coast Sales Rep
317.650.9273



Jake Stinson
Midwest Technical Sales Rep
317.999.8536



Amana Arayan
Natl. Marketing Director
773.550.5455



Savanna Rahn
Director of Marketing
952.250.3047



Leanna Hudson
West Coast Sales Rep
916.496.0876



Sierra Palos
West Coast Sales Rep
916.628.0128



Thomas McClure
West Coast Sales Rep
714.833.2373



Rob Harris
Southeast Sales Rep
317.677.3109



Tim Ricker
General Manager
317.654.7552



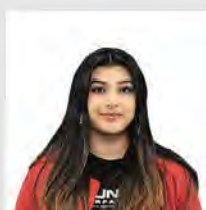
John Cavallaro
Parts & Service Manager
317.416.0432



Jayme Valdez
Customer Service Rep
317.559.0814



Jackie Vertrees
Customer Service Rep
317.559.0809



Diana Ricker
Customer Service Rep
317.608.8507



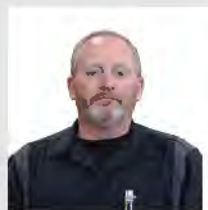
Matt McDonald
Industry Analyst
949.887.2794



Curt Majors
Warehouse Manager



Joe Vertrees
Shipping Manager
317.559.0813



Dan East
Mechanic



Luke Majors
Warehouse Associate



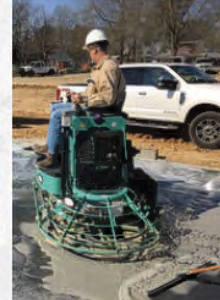
Stacie Lloyd
Director of HR/Finance



Nick Brown
West Coast Warehouse



RIDE-ON POWER TROWEL



HHXDF5

Dual
1397 lbs
14" Runyon MPS

The Multiquip HHXDF5 Dual Fuel Ride-on Trowel delivers all the features contractors demand plus the additional option of running on gasoline or LPG. This new Kubota WG972 engine delivers the power, durability and performance required for today's ever changing customer needs.



SPECIFICATIONS

Dimensions	98" L x 50" W x 54" H
Operating / Shipping Weight	1,397 lbs / 1,472 lbs
Blade Tip Speed	1425 FPM
Rotor	40 - 170 RPM
Path Width	91"
Fuel Tank	9.5 gallons
Hydraulic Oil	Parker Duraclean ISO 46
Hydraulic Oil Capacity	3.65 gallons
No. of Cylinders / Type	3 / Vertical, Water Cooled, 4-Cycle Dual Fuel (Gas/LPG) Engine
Bore x Stroke	2.93" x 2.9"
Total Displacement	0.962 liters
Intake System	naturally aspirated
Cooling System	pressurized radiator forced circulation with water pump
Starting System	electric starting (12V, 0.7kW)
Fuel Capacity	gas 9.5 gallons / propane 33.5 lbs
Catalytic Muffler / Converter	three way catalyst
Direction of Rotation	counter-clockwise

LD6

Gasoline/Propane
865 lbs
11" Runyon MPS

The Multiquip LD6 is the only fully hydrostatic 6' ride-on trowel on the market today. Electro-proportional servo controlled pump and high torque drive motors enable the LD6 to achieve performance levels unmatched in the industry by any 6' ride on trowel on the market today.



SPECIFICATIONS

Dimensions	36" L x 75" W x 55" H
Operating / Shipping Weight	865 lbs / 1,001 lbs
Blade Tip Speed	---
Rotor	0-140 RPM
Path Width	75"
Fuel Tank	4 gallons
Hydraulic Oil	Parker Duraclean ISO 46
Hydraulic Oil Capacity	2.23 gallons
No. of Cylinders / Type	23 HP Briggs & Stratton, 2 Cylinder V Twin, air cooled
Bore x Stroke	2.97" x 2.76"
Total Displacement	627 cc
Intake System	carbureted
Cooling System	air cooled
Starting System	electric start
Fuel Capacity	gas 4 gallons
Catalytic Muffler / Converter	TBD
Direction of Rotation	counter rotating

MAGNETIC PRELOAD SYSTEM



The Runyon Magnetic Preload System (MPS) is an innovative tool holding system for power trowels, auto scrubbers and swing machines. Runyon MPS allows for the fast and efficient changing of any 3" velcro-backed tooling. We offer our MPS in 11", 14", 16", 17", and 20". The system consists of a stainless steel ring that bolts to the pad driver and high density polymer tool holder rings with embedded magnets on one side and six recessed slots for 3" velcro-backed puck style tools on the other.

BACK SIDE



1. The Bearing & Porkchop are mounted on a pad driver, which mounts on the arms of the trowel machine.

2. The Magnetic Preload System (MPS) is attached to each pad driver. The MPS consists of a stainless steel ring and a polymer tool holder that adheres magnetically on the steel ring.

FRONT SIDE



TOOLS

1

Turbo Tulips

velcro-backed metal bond wet tool
16, 30, 70, 120 grit



2

Copper Transitional

velcro-backed hybrid wet tool
30 to 800 grit



3

Wet Slicks

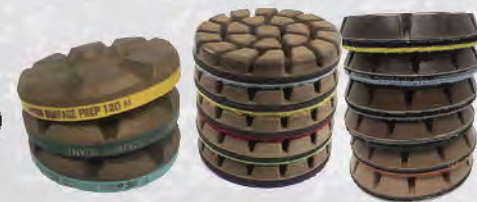
velcro-backed wet resins
200 to 3500 grit



4

RSP SP3

velcro-backed dry resins
200 to 3500 grit



3. Attach your tools. You can run 6 tools per head, or 4 (preferred). To change tools, simply pull off the polymer tool holder currently on the driver and slide a new, fully loaded tool holder on. Each setup comes with 2 holders, so you always have your next step of tools loaded and ready to go.

SLURRY PROCESSING SYSTEM:

proper containment & disposal

With the rising trends of wet polishing along with the OSHA silica standard, the need for a streamlined slurry management process is key. While there is no “one answer”

for how to most efficiently and economically dispose of slurry, our manufacturers and our own outside sales reps strive to help provide solutions for contractors facing this dilemma.

Here’s an example of an effective slurry processing system.



PUMPS & HOSES <p>Honda 2" Submersible Pump Tsurumi 2" Sump Pump Hoses</p>	BAGS <p>Reusable Dewatering Slurry Bag Disposable Dewatering Slurry Bag</p>
SLURRY AGENTS <p>Slurry Destroyer Slurry Safe Slurry Sep Slurry Dry</p>	TOOL CLEANING <p>RSP Tooling Tray Organize Your Tooling 5 Gal Elastic Strainer Cleaning Tools</p>
SLURRY VACUUMS <p>Grabber 30 Gal Vacuum Pullman Holt 20 Gal Vacuum</p>	SCRUBBERS <p>Tennant 5680 Scrubber RSP Revive Cleaner</p>

PROCESS STEPS

01 step Pump slurry from auto scrubber into mixing tote

02 step Add 1 cup of SlurrySep into the tote

03 step Use an paddle or broom handle to bubble the slurry, to agitate it in the tote for 3 min, you'll see the flocculant forming

04 step Drop in a sump pump and start pumping into the second tote with the slurry bag in it

[NOTE: make sure the slurry bag has enough space on the side walls and bottom so the water has room to get out]

05 step The clear water will immediately pass through the slurry bag and the clumped floc will stay in the bag

06 step Pump out the clean water & add Slurry Dry to the slurry bag

07 step Let the slurry bag drain all the water out and then dump out the slurry coagulant for disposal



POWER STRIP n' SCRUB SYSTEM

The RSP Power Strip N' Scrub System is a method of attaching non-woven floor pads to power trowels to increase the functionality and versatility of the equipment. Designed to run under an 8' ride-on trowel, each pad is 46" and goes onto a flat float pan equipped with male velcro holders; this makes changing pads simple, fast and efficient. The RSP Power Trowel Scrub System can be used for:



OPTION 1: PANS

- (2) 46" float pans
- (10) pad driver velcros
- (2) 46" pads (see below)

*adhere 5 velcro rings per pan

OPTION 2: MPS SYSTEM

- (10) 14" MPS Velcro Holders
- (10) MPS attachment systems
- (10) 14" pads (see below)

*Use your pre-existing MPS System, simply switch out the rings for these



Application

01

RESTORATION/REJUVENATION

of Previously Polished Concrete or Terrazzo
Using diamond impregnated pads in sequence under the power trowel can breathe new life into floors that have lost their luster



Application

02

STRIPPING CURE & SEAL

Using black stripping pads under the trowel, in conjunction with a chemical stripper, will quickly remove a cure and seal from the surface of the concrete



Application

03

SCRUB & DENSIFY

Agitating a sodium silicate densifier or chemical hardener using a power trowel equipped with the RSP Power Trowel Scrub System is much faster than using an auto scrubber



Application

04

FINAL CLEAN / DEEP SCRUB

The weight and working width of a power trowel make it ideal for quickly performing a final clean prior to turning a floor over or for a deep scrub cleaning of an extremely soiled



BENEFITS & TRENDS of trowel polishing

POWER TROWEL POLISHING BENEFITS

- Average labor reduction of 75% compared to traditional 32" planetary grinding and polishing
- Ability to complete 10k+ square feet per hour per grit
- Wet process eliminates risk of airborne silica hazard
- Power trowels are now extremely versatile - not only for finishing, but also as highly productive polishing machines
- Free Floating Passive Planetary System

WHY WE DEVELOPED OUR SYSTEM

The RSP Magnetic Preload System was developed to maximize the efficiency and versatility of power trowel concrete polishing. The innovative magnetic quick change attachment system minimizes machine down time for tooling changes, by having the next step of tools preloaded on the second set of rings. The time spent changing out tools is now measured in seconds. The RSP Magnetic Preload System was built around standard 3" velcro-backed puck tools, allowing for a wide variety of tooling to be easily mounted on a power trowel. This versatility makes selecting the right tool for the job at hand simple and easy. Our system allows for variation of head pressure by adjusting the number of tooling per head.



TECHNOLOGY - INNOVATION - MAINTENANCE - EFFICIENCY



RUNNYON

SURFACE PREP



Call for FREE hands-on training classes

Learn. Demo. Network.

CONTACT:

www.runnyonsurfaceprep.com or contact your sales rep

800.896.8665

